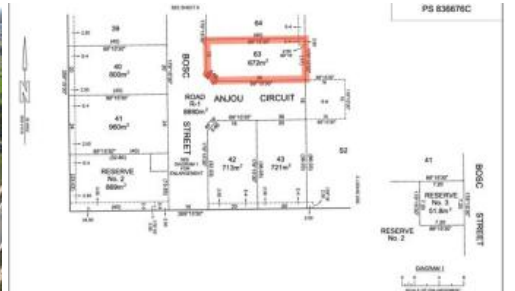




34 Anjou Circuit, Cobram



Prime Corner Block in Murray Orchard Estate

This fully serviced, level 672m² corner block presents an exceptional opportunity to build your dream home in the highly sought-after Murray Orchard Estate.

Perfectly positioned in a quality neighbourhood, this prime homesite offers excellent street frontage and flexibility in design, making it ideal for a range of modern home layouts.

With all services available and ready to connect, you can start planning straight away and take advantage of this rare offering in one of the area's most popular residential estates.

These details have been prepared to assist solely in the marketing of this property. While all care has been taken to ensure the information herein is correct, we do not take responsibility for any inaccuracies. Accordingly all interested parties should make their own enquiries to verify the information.

The above information provided has been furnished to us by the vendor/s. We have not verified whether or not that information is accurate and do not have any belief in one way or the other in its accuracy. We do not accept any responsibility to any person for its accuracy and do no more than pass it on. All interested parties should make and rely upon their own inquiries in order to determine whether or not this information is in fact accurate.

672m²

Price \$195,000
Property Type Residential
Property ID 5124
Land Area 672 m²

Agent Details

Jake Jenkins - 0428 217 898
 Andrew Jenkins - 0428 570 717

Office Details

Cobram
 33 High Street Cobram VIC 3644
 Australia
 03 5871 1025

