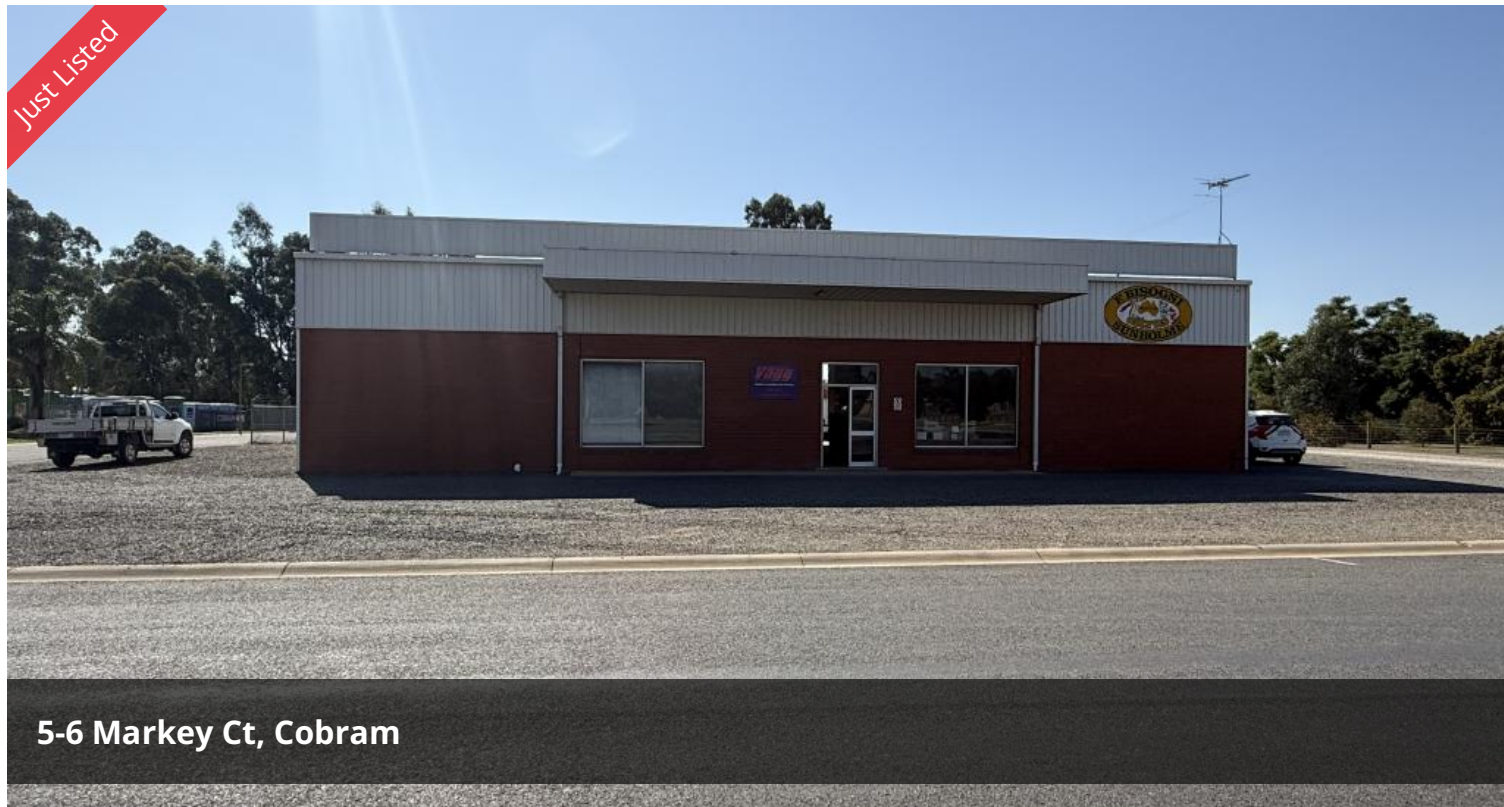


Just Listed



5-6 Markey Ct, Cobram



Great Commercial Shed with Yard Space

Commercial Shed Ready Soon!

Property Features:

- Approx. 480m² total floor area (approx. 24x20m)
- X2 High roller door access – easy entry for trucks and equipment (side and rear yard)
- Includes office space and onsite toilet facilities
- Clear-span layout for maximum usability
- Secure and accessible
- Fenced yard with room for truck deliveries

Location Highlights:

- Situated in a highly sought-after commercial precinct
- Easy access to major roads and transport routes
- Surrounded by thriving businesses

Perfect for storage, trade operations, or light industrial use.

Contact us today to arrange an inspection or for more info.

Price \$600pw plus
outgoings

Property Type Commercial

Property ID 5054

**Warehouse
Area** 480 m2

Agent Details

Amanda Ramsay - 0439 533 292

Office Details

Cobram

33 High Street Cobram VIC 3644
Australia

03 5871 1025



ANDREW JENKINS
REAL ESTATE

These details have been prepared to assist solely in the marketing of this property. While all care has been taken to ensure the information herein is correct, we do not take responsibility for any inaccuracies. Accordingly all interested parties should make their own enquiries to verify the information.

The above information provided has been furnished to us by the vendor/s. We have not verified whether or not that information is accurate and do not have any belief in one way or the other in its accuracy. We do not accept any responsibility to any person for its accuracy and do no more than pass it on. All interested parties should make and rely upon their own inquiries in order to determine whether or not this information is in fact accurate.