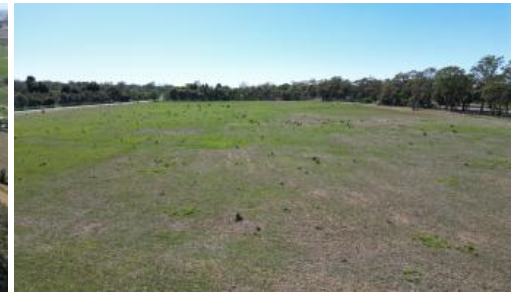




**54 Cobrawonga Rd, Cobram East**



## Rare 16.6-Acre Lifestyle Property

This exceptional 16.6-acre (6.72ha) property is ideally located between Cobram and Yarrawonga. Positioned close to the stunning Murray Bushland, this block offers an unparalleled opportunity to create your dream home (STCA) in a highly sought-after location.

Surrounded by prestigious homes and with sealed road frontage, fully fenced boundaries, and essential utilities like power available and a bore already drilled, this land is ready for you to bring your vision to life.

The location is second to none, offering the peace and privacy of a rural lifestyle while remaining conveniently close to nearby towns. The proximity to the natural beauty of the Murray Bushland further enhances the appeal, making it an ideal setting for those who value both serenity and accessibility.

Properties of this calibre rarely come onto the market in such a desirable area. Don't miss the chance to secure this exceptional piece of land and start building the life you've always dreamed of.

Contact us today for further info!

 16.60 ac

<b>Price</b>	\$555,000
<b>Property Type</b>	Residential
<b>Property ID</b>	4982
<b>Land Area</b>	16.60 ac

### Agent Details

Jake Jenkins - 0428 217 898  
Andrew Jenkins - 0428 570 717

### Office Details

Cobram  
33 High Street Cobram VIC 3644  
Australia  
03 5871 1025



**ANDREW JENKINS**  
REAL ESTATE

These details have been prepared to assist solely in the marketing of this property. While all care has been taken to ensure the information herein is correct, we do not take responsibility for any inaccuracies. Accordingly

all interested parties should make their own enquiries to verify the information.

The above information provided has been furnished to us by the vendor/s. We have not verified whether or not that information is accurate and do not have any belief in one way or the other in its accuracy. We do not accept any responsibility to any person for its accuracy and do no more than pass it on. All interested parties should make and rely upon their own inquiries in order to determine whether or not this information is in fact accurate.