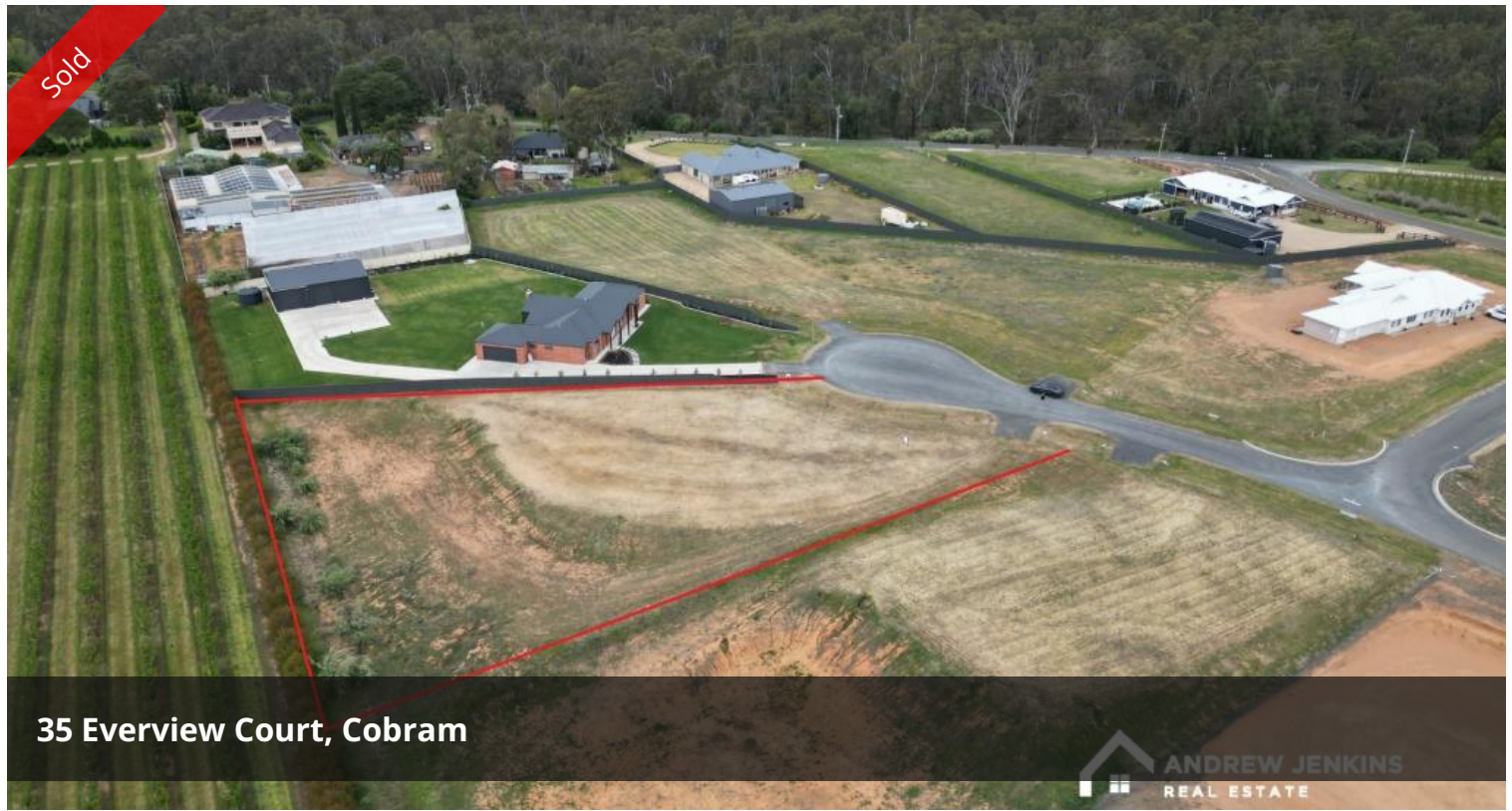


Sold



35 Everview Court, Cobram



Prestigious Elevated Homesite with Stunning Views

Located in one of the most sought-after estates, an unparalleled opportunity awaits with this premium 4053m² elevated homesite, offering stunning views and a generous 42.3-meter frontage on Everview Court.

Nestled close to the Murray River bushland, with town water, power, and NBN services readily available.

Join a sophisticated community of quality homes and embrace a lifestyle that offers both prestige and connection to nature.

Call us today to make it yours!

These details have been prepared to assist solely in the marketing of this property. While all care has been taken to ensure the information herein is correct, we do not take responsibility for any inaccuracies. Accordingly all interested parties should make their own enquiries to verify the information.

The above information provided has been furnished to us by the vendor/s. We have not verified whether or not that information is accurate and do not have any belief in one way or the other in its accuracy. We do not accept any responsibility to any person for its accuracy and do no more than pass it on. All interested parties should make and rely upon their own inquiries in order to determine whether or not this information is in fact accurate.

📏 4,053m²

Price SOLD for \$385,000

Property Type Residential

Property ID 4908

Land Area 4,053 m²

Agent Details

Andrew Jenkins - 0428 570 717

Jake Jenkins - 0428 217 898

Office Details

Cobram

33 High Street Cobram VIC 3644

Australia

03 5871 1025

