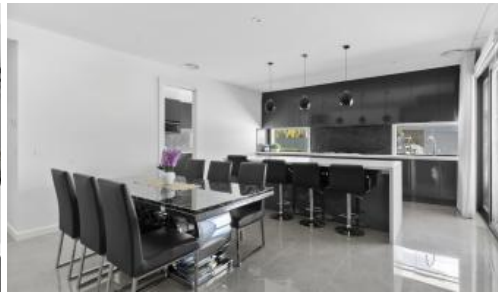




**1 Packham Dr, Cobram**



## Luxurious Near-New Family Home Close to Town - A Must-See!

**Discover the perfect blend of luxury and convenience with this near-new, expansive family home, situated on a generous 1526m<sup>2</sup> of land. Ideal for large families or anyone seeking ample space close to town, this property boasts four bedrooms, including two master suites, two study/work from home offices, three bathrooms, two powder rooms, and an outside toilet, this home is designed for ultimate convenience.**

The open-plan design seamlessly connects the gourmet kitchen, meals, and lounge areas, making it the heart of the home. The kitchen is a chef's dream, featuring Caesarstone benchtops with waterfall edges, a large gas cooktop, oven, dishwasher, and a spacious butler's pantry with a double sink and an abundance of storage.

Elegant touches abound, with stunning sheer curtains, ceiling fans, and refrigerated reverse cycle air conditioning throughout. The house also offers multiple living areas, including a formal front lounge and a separate activity/family room, providing versatile spaces for relaxation and entertainment.

Plenty of storage throughout the home, with spacious walk-in linen cupboard, abundance of storage in the kitchen area, bedrooms, and activity room, ensuring all your storage needs are met. The property also comes with a security system with seven cameras keeping the property safe and secure at all times

4 3 3 1,526 m2

<b>Price</b>	\$1,100,000
<b>Property Type</b>	Residential
<b>Property ID</b>	4814
<b>Land Area</b>	1,526 m2

### Agent Details

Andrew Jenkins - 0428 570 717  
Jake Jenkins - 0428 217 898

### Office Details

Cobram  
33 High Street Cobram VIC 3644  
Australia  
03 5871 1025



Step outside to the impressive undercover outdoor kitchen, equipped with automatic bistro blinds, a gas cooktop, rangehood, double sink, and stone benchtops, perfect for alfresco dining. The property features extensive outdoor space with veggie patches for the green thumb, a large Colorbond shed approximately 5x5m, and an additional undercover carport and toilet. Convenient rear access from side of the house and the double garage with a single roller door adds to the functionality.

It's an excellent choice for families needing extra space for studies or activities. The proximity to town, combined with the spacious and thoughtful layout, makes this home a rare find.

**An inspection is a must to truly appreciate the size, style, and functionality of this stunning property.**

**Don't miss the opportunity to make it yours – contact us today to schedule your viewing!**

These details have been prepared to assist solely in the marketing of this property. While all care has been taken to ensure the information herein is correct, we do not take responsibility for any inaccuracies. Accordingly all interested parties should make their own enquiries to verify the information.

The above information provided has been furnished to us by the vendor/s. We have not verified whether or not that information is accurate and do not have any belief in one way or the other in its accuracy. We do not accept any responsibility to any person for its accuracy and do no more than pass it on. All interested parties should make and rely upon their own inquiries in order to determine whether or not this information is in fact accurate.