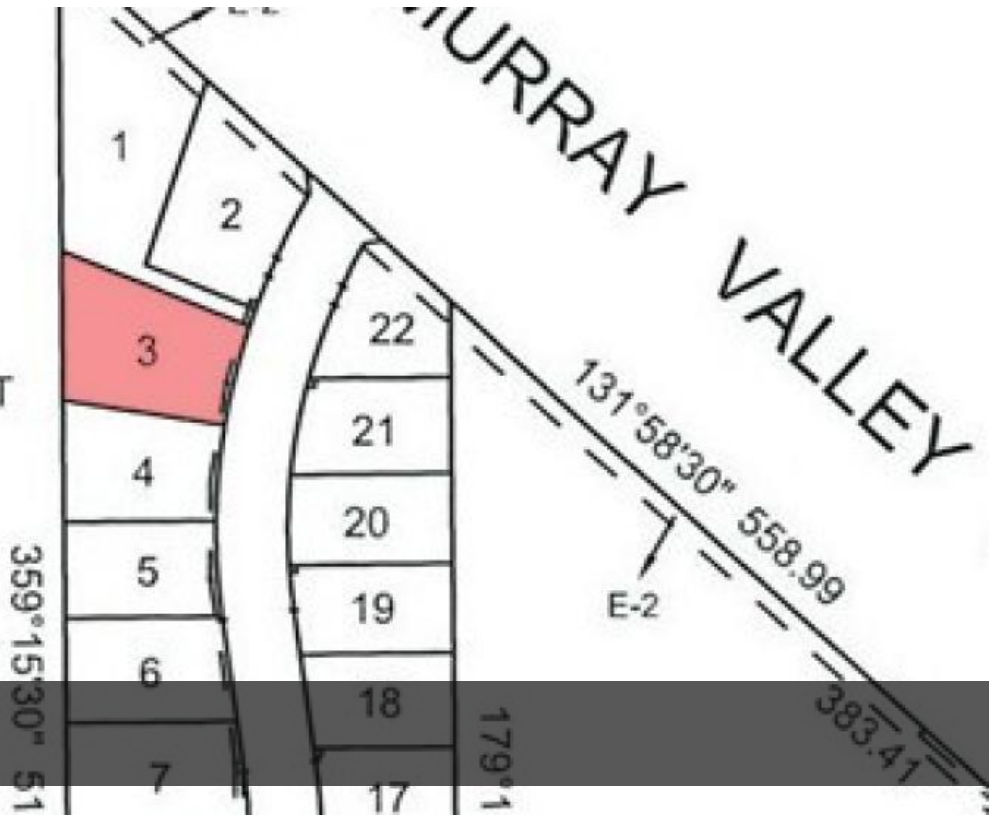


Sold

SEE SHEET 3  
FOR ENLARGEMENT



### Lot 3 Packham Drive, Cobram

## Exclusive Murray Orchard Estate - LOT 3

### Lot 3

Lifestyle with Space ~ Sensational new subdivision right on the edge of town, with blocks sizes varying from 1449m<sup>2</sup> to 3687m<sup>2</sup>. Water, sewerage and all other services available. A vary rare opportunity to build your dream home in a new estate with plenty of room to move. Blocks are selling fast, reserve yours now!

The above information provided has been furnished to us by the vendor/s. We have not verified whether or not that information is accurate and do not have any belief in one way or the other in its accuracy. We do not accept any responsibility to any person for its accuracy and do no more than pass it on. All interested parties should make and rely upon their own inquiries in order to determine whether or not this information is in fact accurate.

2,411m<sup>2</sup>

**Price** SOLD for \$235,000

**Property Type** Residential

**Property ID** 3527

**Land Area** 2,411 m<sup>2</sup>

#### Agent Details

Andrew Jenkins - 0428 570 717

#### Office Details

Cobram

33 High Street Cobram VIC 3644

Australia

03 5871 1025



**ANDREW JENKINS**  
REAL ESTATE